

## Hyperion 233v4 HL Pulsed DC Controller



**Product Code:** 233v4HL

The Hyperion 233v4 HL Pulsed DC Controller is a compact unit, principally designed to directly power two Meech 924EX pulsed DC ionisers. If more ionisers are required, they can be connected via splitters.

The 233v4 HL features all the adjustability and monitoring that you would expect from a Hyperion product. Fully BarMaster compatible, the output voltage, frequency and balance can all be adjusted to suit particularly difficult applications and very sensitive materials found in EX zones.

A key feature of the 233v4 HL is Meech's Ion Current Monitoring technology which allows greater control of the ionisation performance, by monitoring the effectiveness of the ionising output. This is supported with integrated output signals which alert operators of the need to clean the attached ioniser to achieve maximum performance.

### Features

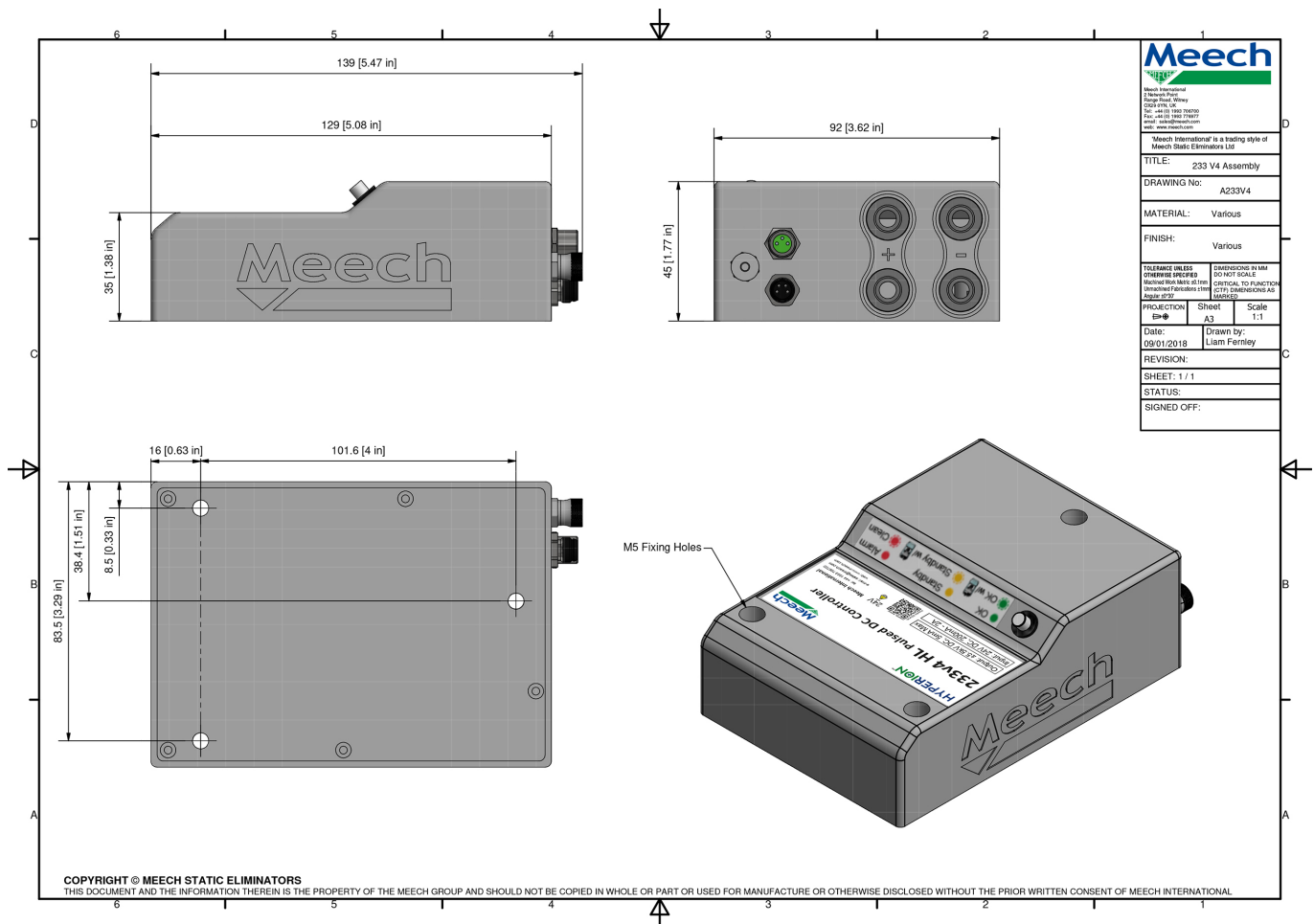
### Benefits

LED Status and Clean Pin Alert	Alerts the user to clean the pins to achieve optimum performance
Adjustable Voltage	Achievable with BarMaster
Adjustable Output	Achieve the very best performance at the target distance using a BarMaster, for sensitive applications
Remote On/Off	Allows the unit output to be switched on and off using volt free contact

Product shown in this document may be covered by one or more patents, patents applied for and/or registered designs and/or trade marks. For further information please refer to our Head Office or visit [www.meech.com](http://www.meech.com).

## Technical Characteristics

Supply Voltage	24V DC
Input Connection	4 Pin M8 Connector
Output Voltage	2 - 5.5kV Pulsed DC, adjustable with BarMaster
Output Frequency	Adjustable with BarMaster from 1-20Hz
Output Balance	Adjustable with BarMaster from 80:20 to 20:80 Pos:Neg
Output Current	5mA Maximum
Electrical Consumption	Maximum 625mA
Operating Environment	0 - 55°C
LED Indication	Red/Green/Amber LED
Protection Class	IP67
Remote HT on/off	3-pin M8 Connector (blue and brown wires used)
Clean Pin	HT failure 24V signal
Dimensions (mm)	46 x 93 x 129
Weight	650g
Housing Material	DuraForm PA (Nylon 12)



Product shown in this document may be covered by one or more patents, patents applied for and/or registered designs and/or trade marks. For further information please refer to our Head Office or visit [www.meech.com](http://www.meech.com).

# Product Data Sheet

Published Date: 05.11.18



Product shown in this document may be covered by one or more patents, patents applied for and/or registered designs and/or trade marks. For further information please refer to our Head Office or visit [www.meech.com](http://www.meech.com).

**Meech International**

UK: +44 1993 706 700  
Hungary: +36 27 535 075

US: +1 330 564 2000  
China: +86 400 820 0102

Belgium: +32 8067 0204  
India: +91 (0)7030938211

Singapore: +65 65918859

email: [sales@meech.com](mailto:sales@meech.com)  
web: [www.meech.com](http://www.meech.com)