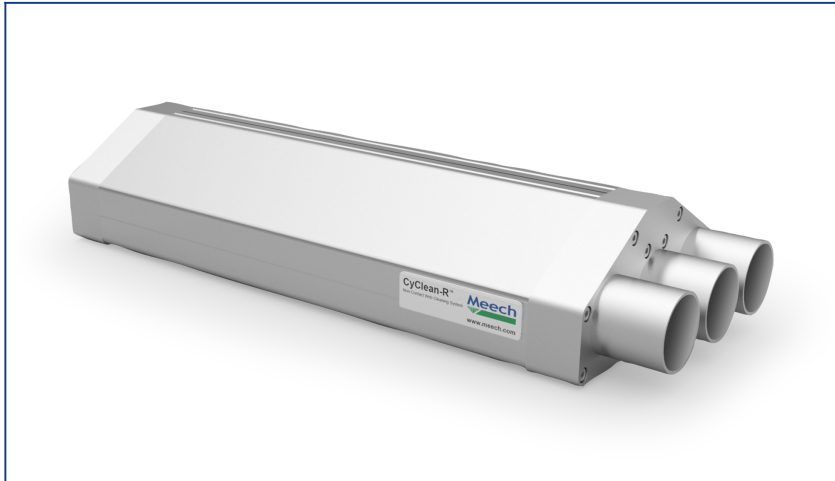


CyClean-R™ Narrow Web Non-Contact Web Cleaning System



Product Code: CyClean-R

CyClean-R is a non-contact web cleaning system, designed for webs running in low tension.

CyClean-R is available as a single-sided cleaning system, but can be offered as a double-sided cleaning configuration as an option where required. CyClean-R delivers consistent removal of dry, unbonded contamination from the web surface (particle removal to 0.5 micron is achievable).

It uses the engineered CyClean cleaning technique of advanced computational fluid dynamics, whilst bypassing the challenges presented by low tension webs by cleaning the web on the roller. It is supplied with the latest Hyperion 924IPS Bars offering industry-leading static elimination.

Features

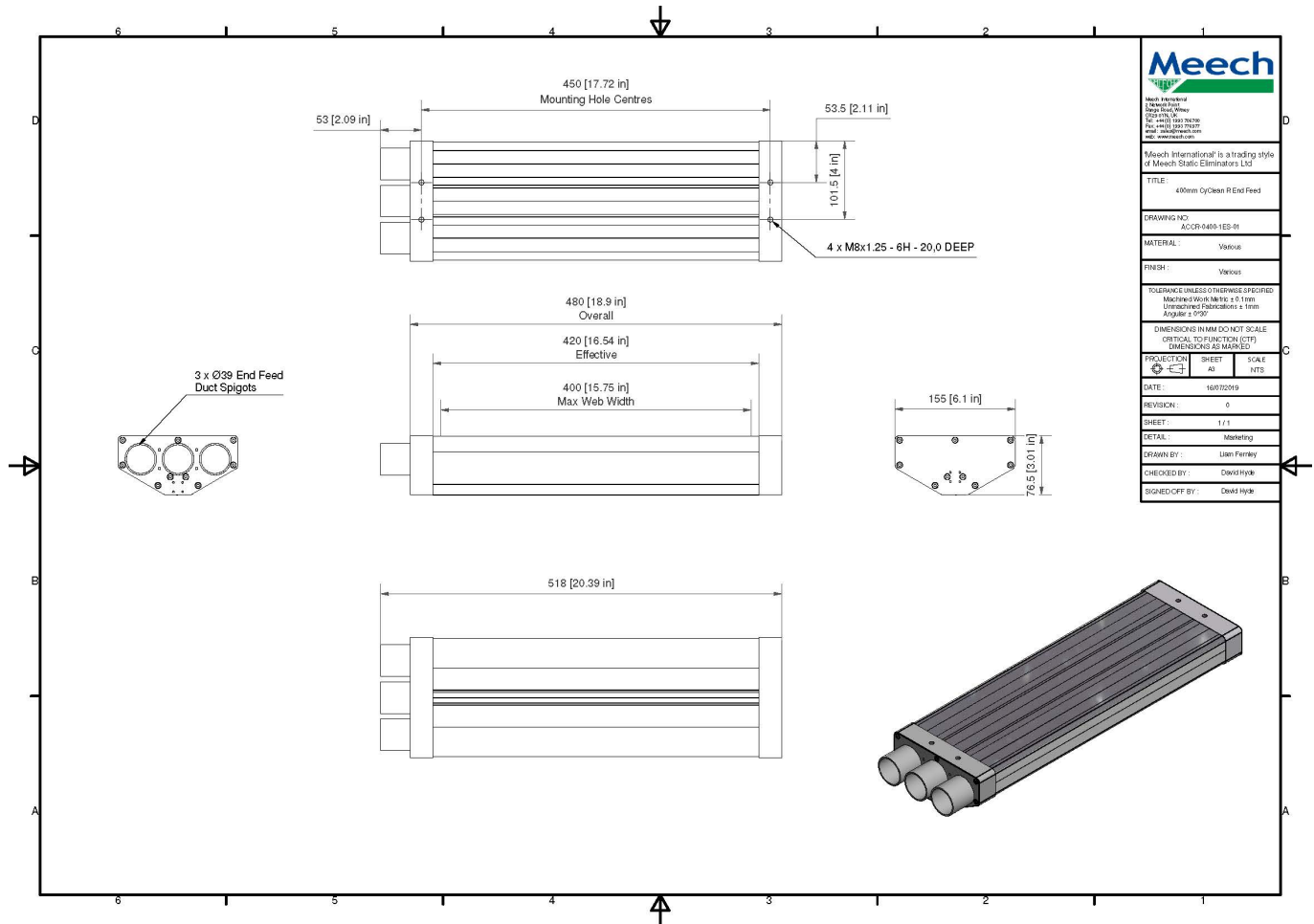
Benefits

Non-Contact Web Cleaning	Eliminates the risk of surface damage occurring. Also ensures no interference with web tension or web tracking.
Unique Shape to Deliver Cleaning over a Guided Roller	Avoids challenges presented with low web tensions and ensures effective non-contact cleaning without the danger of damaging the web. Due to the shape of the CyClean-R, the air is forced into a precise direction at extremely high velocity, enhancing the cleaning performance.
Robust Design	Ability to clean up to 1299mm web widths.
Compact Design	Space-saving design which can be installed on most machines.
Air Balancing	Allows complete control of the balance between blow and vacuum airflows.
Auto Airflow Adjustment	Reduces the frequency of required operator adjustments. Maintains optimum cleaning performance automatically.
No Consumable Items	Lower ongoing costs.
Quiet Operation	Can be installed in enclosed work areas. No health and safety issues due to low noise output.
Static Control	2 x 924IPS DC Bars

Product shown in this document may be covered by one or more patents, patents applied for and/or registered designs and/or trade marks. For further information please refer to our Head Office or visit www.meech.com.

Technical Characteristics

Maximum Web Speed (Web Driven)	600mtrs/min, 1968ft/min
Maximum Web Width	Up to 1299mm
Duct Connections *Standard for systems up to 700mm web width.	Fixed position 6x40mm Ø OD
Mounting	4x M8 x 16mm holes
Opening	Option of fixed, manual hinged or pneumatic for up to 700mm web width. Fixed or Pneumatic option for 700mm - 1299mm web width.
Duct spigot options	Option of end-feed or top-feed spigot configurations up to 700mm. Top-feed only from 700mm - 1299mm.
Dimensions (H x D x W)	Top-Feed: 110.5mm x 155mm x Max. 1299mm End-Feed: 76.5mm x 155mm x Max. 700mm



Product shown in this document may be covered by one or more patents, patents applied for and/or registered designs and/or trade marks. For further information please refer to our Head Office or visit www.meech.com.