

CyClean™ Non-Contact Web Cleaning System



Product Code: CyClean

The Meech CyClean™ has been designed in response to increased demand for a compact, high performance, non-contact web cleaning system.

Through the application of advanced computational fluid dynamics, Meech has optimised the cleaning efficiency of CyClean to remove and extract contamination to below 1 micron.

A CyClean system comprises three main components; the cleaning head, active static control and an Air Handling Unit (AHU).

The video below provides further information on the CyClean™ Non-Contact Web Cleaning System.

Below is an animation that illustrates how the CyClean™ Non-Contact Web Cleaning System Works.

View related article ["Xeikon partners with Meech and invests in CyClean non-contact web cleaning system"](#)

Product Data Sheet

Published Date: 20.08.2020



Features & Benefits

Non contact cleaning	Eliminates risk of surface marking and damage. No interference with web tension or web tracking.
Compact design	Flexible positioning & easy installation.
Integrated static control	Neutralises static charges to optimise cleaning performance and prevent re-contamination.
Unique 'fixed ports' system	The ducting connections to the cleaning head remain stationary, resulting in easier installation.
Air balancing	Allows complete control of the bias between blowing and vacuum airflows.
Auto airflow adjustment	Reduces the frequency of required operator adjustments.
Hinged, clam shell design	Allows unit to open for easy threading of the web.
No consumable items	Lower ongoing costs
Quiet operation	Can be installed in enclosed work areas. No H&S issues due to noise.

Product shown in this document may be covered by one or more patents, patents applied for and/or registered designs and/or trade marks. For further information please refer to our Head Office or visit www.meech.com.

Meech International

UK: +44 1993 706 700
Hungary: +36 27 535 075

US: +1 330 564 2000
China: +86 400 820 0102

Belgium: +32 8067 0204
India: +91 (0)7030938211

Singapore: +65 65918859

email: sales@meech.com
web: www.meech.com

Product Data Sheet

Published Date: 20.08.2020



Technical Characteristics

Maximum web speed (web driven)	600 mtrs/min, 1968 ft/min
Maximum web width	up to 2000mm, 78"
Duct connections	Fixed position 6 x 40mm Ø OD
Static control (active)	4 x 914 AC bars, 110/240V AC, 50/60Hz
Mounting	4 x M8 x 16mm holes
Standard opening	Manual with gas strut and end hinges
Optional opening upgrade	Pneumatic

Product shown in this document may be covered by one or more patents, patents applied for and/or registered designs and/or trade marks. For further information please refer to our Head Office or visit www.meech.com.

Meech International

UK: +44 1993 706 700
Hungary: +36 27 535 075

US: +1 330 564 2000
China: +86 400 820 0102

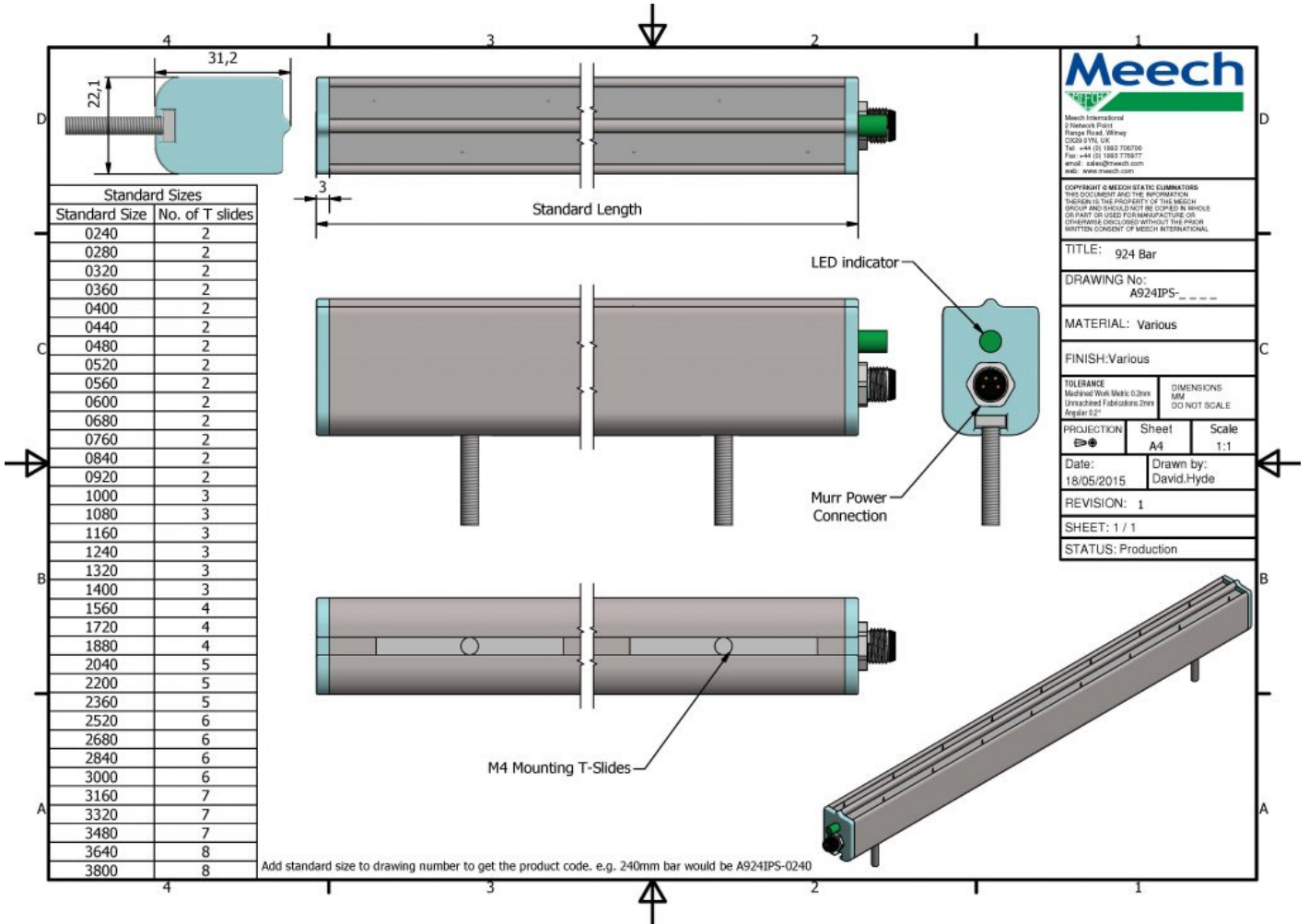
Belgium: +32 8067 0204
India: +91 (0)7030938211

Singapore: +65 65918859

email: sales@meech.com
web: www.meech.com

Product Data Sheet

Published Date: 20.08.2020



Product shown in this document may be covered by one or more patents, patents applied for and/or registered designs and/or trade marks. For further information please refer to our Head Office or visit www.meech.com.

Meech International

UK: +44 1993 706 700
Hungary: +36 27 535 075

US: +1 330 564 2000
China: +86 400 820 0102

Belgium: +32 8067 0204
India: +91 (0)7030938211

Singapore: +65 65918859

email: sales@meech.com
web: www.meech.com