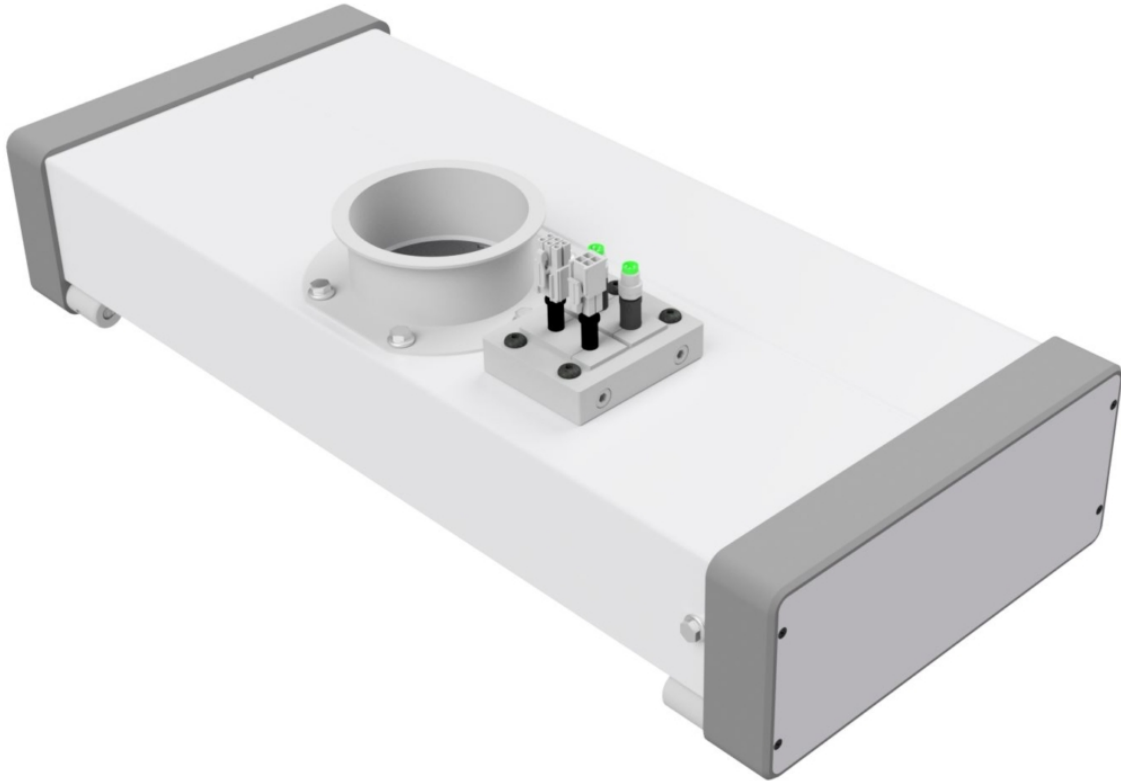


## RoClean™ Contact Web Cleaner



### Product Code: RoClean

RoClean is the latest contact web cleaner from Meech, delivering excellent surface cleaning results for the battery film manufacturing industry as well as other applications demanding exceptional cleaning standards.

RoClean effectively cleans the web surface through the use of both static control and an efficient bristle roller brush. The 924IPS ionising bars neutralise the static charges on the web, releasing the contaminants, whilst the bristle brush rollers rotate at speed in order to sweep clean the surface. The contamination is then immediately vacuumed into the AHU filtration unit to avoid recontamination of the surface.

As RoClean is positioned above or below a guide roller on the web production line, it avoids all issues of tension in order to provide a high level of surface cleaning. For double-sided cleaning, two units may be used consecutively on the line.

In order to meet the varying needs of applications, RoClean brush rollers are interchangeable. This gives the ability to use the most suitable bristle media to meet the needs of the application and the material, be it a delicate surface or a more demanding application. This makes the RoClean versatile to a number of installations and changing production lines.

# Product Data Sheet

Published Date: 19.05.2021



## Features & Benefits

<b>Robust and compact design</b>	The RoClean has been designed to fit with most machinery.
<b>Included static control</b>	The addition of 2 x 924IPS static control bars improves the cleaning performance by providing effection ionisation, in order to neutralise the static charges on the web that attract ionisation.
<b>Interchangeable bristle-brush rollers</b>	The most suitable bristle profile can be chosen and used depending on the application to provide the best results, most sensitive to the production conditions.
<b>Adjustable brush roller speed</b>	Adjusting the speed of the brush rollers means that RoClean is versatile and can suit the changing web speeds in the production line, whilst delivering highly efficient surface cleaning.
<b>Long brush operation life</b>	For continued effective cleaning.
<b>Advanced filtration</b>	Filtration to 99.997% @0.3 $\mu$ possible with the use of a HEPA filter.

Product shown in this document may be covered by one or more patents, patents applied for and/or registered designs and/or trade marks. For further information please refer to our Head Office or visit [www.meech.com](http://www.meech.com).

Meech International

UK: +44 1993 706 700  
Hungary: +36 27 535 075

US: +1 330 564 2000  
China: +86 400 820 0102

Belgium: +32 8067 0204  
India: +91 (0)7030938211

Singapore: +65 65918859

email: [sales@meech.com](mailto:sales@meech.com)  
web: [www.meech.com](http://www.meech.com)

# Product Data Sheet

Published Date: 19.05.2021



## Technical Characteristics

Maximum Web Width	2200mm
Ducting Connections	80mm
Mounting	2 x M8 mounting holes positioned at each end of the RoClean

Product shown in this document may be covered by one or more patents, patents applied for and/or registered designs and/or trade marks. For further information please refer to our Head Office or visit [www.meech.com](http://www.meech.com).

Meech International

UK: +44 1993 706 700  
Hungary: +36 27 535 075

US: +1 330 564 2000  
China: +86 400 820 0102

Belgium: +32 8067 0204  
India: +91 (0)7030938211

Singapore: +65 65918859

email: [sales@meech.com](mailto:sales@meech.com)  
web: [www.meech.com](http://www.meech.com)